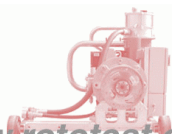


ISSUED BY



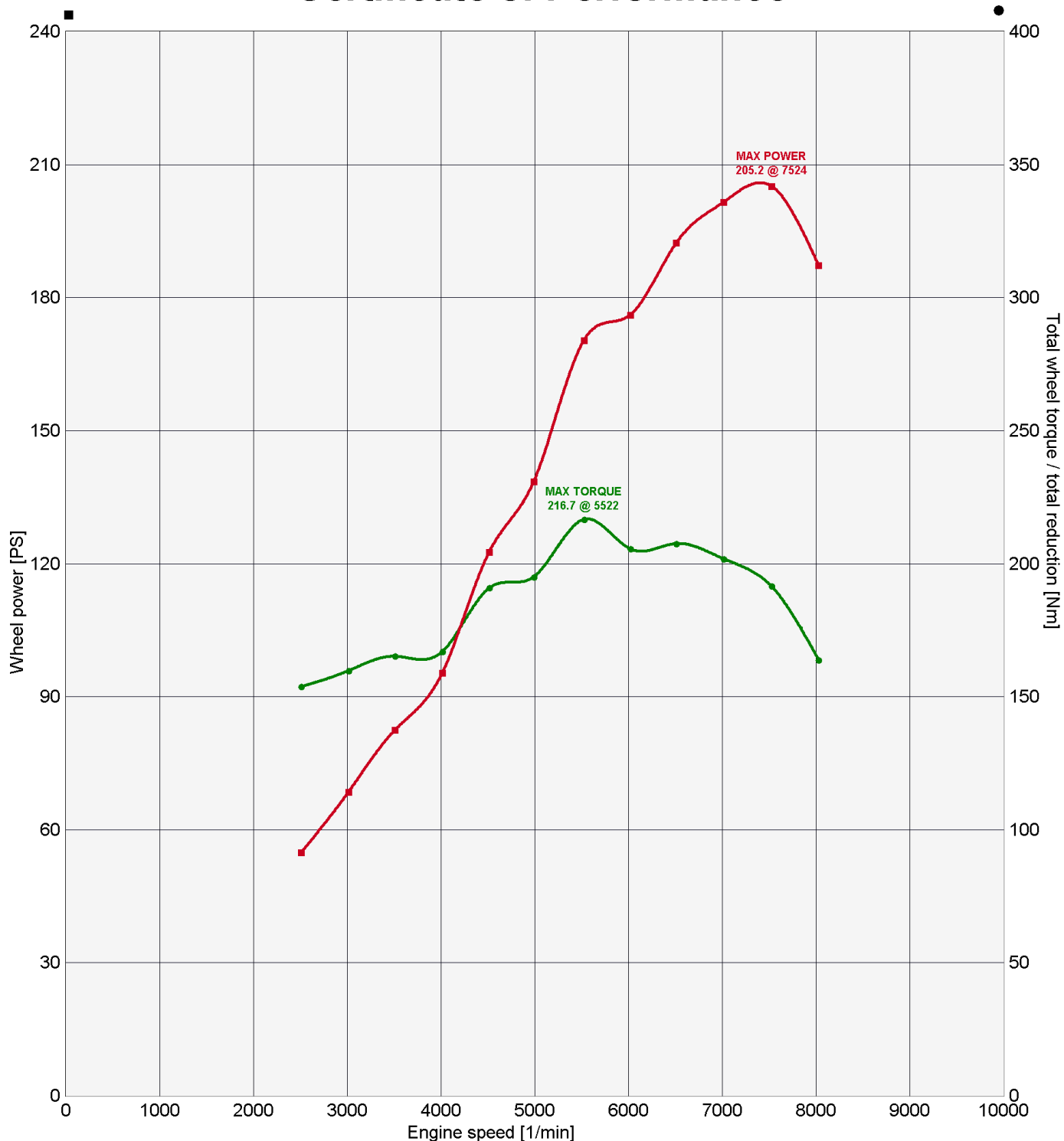
Rototest Research Institute
 (c) Copyright Rototest Research Institute. All rights reserved. For limited non-profit use, see terms at www.rototest.com.

www.rototest.com/rri



Rototest
 Salemsvä 20
 SE-144 40 Ronninge
 Sweden
 Tel +46 8 532 55 890
 Fax +46 8 532 52 740
 info@rototest.se

Certificate of Performance



Vehicle	Description	Mode	Correction	Legend
Opel Astra Kit Car	Modified	Steady State	ISO 1585 (5/82)	■ ●

Printed 2009-02-12 08:33

53701

ROTOTEST VPA / VPA-R chassis dynamometer system | www.rototest.com



Downloaded from www.rototest.com/rri on 2009-05-16 20:18 by 87.177.19.3

(c) Copyright Rototest Research Institute. All rights reserved. For limited non-profit use, see terms at www.rototest.com/rri.

Performance graphs are available as high resolution images. Please contact RRI for more information.

For special test cars the fuel and engine specification are according to test customer information, unless stated otherwise.

ISSUED BY



Rototest Research Institute

(c) Copyright Rototest Research Institute. All rights reserved. For limited non-profit use, see terms at www.rototest.com.

www.rototest.com/rri



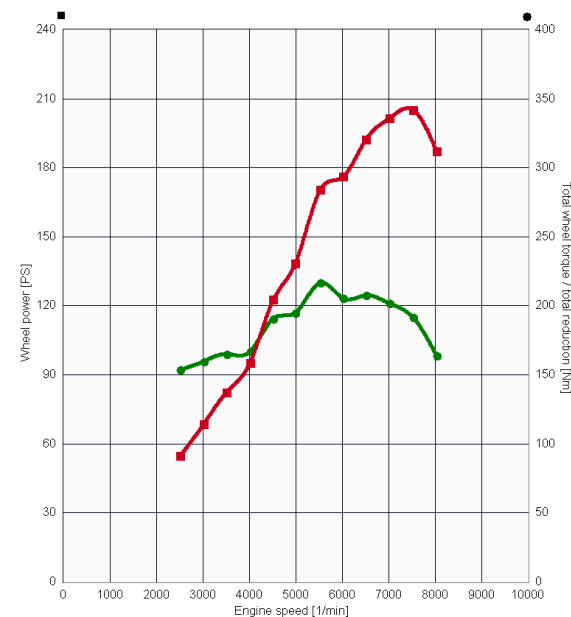
Certificate of Performance

Test ID STR-09021101
Created 2009-02-11 10:11
Vehicle ID
Vehicle make Opel
Vehicle model Astra Kit Car
Engine SI NA, 2000 cc, I4, 16v
Mileage
Test mode Steady State
Test fuel 98 RON
Customer Trendab
Description Modified

Measured at [1/min]
Max power [PS] 205.2 7524
Max torque [Nm] 216.7 5522
Correction ISO 1585 (5/82)
Atm pressure [hPa] 1000 - 1000

Comments

Swedish "Group H" rally car. Prepared by Trendab motorsport, Sweden. Test fuel supplied by the owner!



Engine speed [1/min]	Corr power [PS]	Corr torque [Nm]	Wheel speed [1/min]	Total red [1/x]	Total wheel torque [Nm]	Total wheel torque / total red [Nm]	Wheel power [PS]	Inl temp* [°C]	Rel hum [%]	Amb temp [°C]	Oil temp* [°C]	Sample Corr factor	Sample Time [s]
2506	54.8	153.7	433	5.785	903	156.0	55.7	21	20	21		0.985	2.9
3011	68.5	159.8	520	5.785	938	162.1	69.5	21	20	21		0.986	3.0
3505	82.5	165.2	606	5.786	969	167.5	83.6	21	20	21		0.986	2.9
4010	95.3	166.9	693	5.785	980	169.4	96.7	21	19	21		0.985	2.9
4512	122.6	190.9	780	5.786	1121	193.8	124.5	20	19	21		0.985	3.0
4988	138.6	195.1	862	5.786	1145	197.9	140.6	21	19	21		0.986	2.9
5522	170.4	216.7	954	5.786	1270	219.6	172.6	21	19	21		0.987	2.8
6016	176.1	205.6	1040	5.786	1207	208.6	178.6	21	19	22		0.986	2.9
6508	192.4	207.6	1125	5.786	1217	210.4	195.0	21	19	22		0.987	2.9
7010	201.5	201.9	1212	5.785	1186	204.9	204.6	20	19	22		0.985	2.8
7524	205.2	191.5	1300	5.785	1124	194.2	208.1	21	19	22		0.986	2.8
8027	187.3	163.9	1387	5.785	962	166.2	190.0	21	18	22		0.986	2.9

* Inl temp measured in intake before air filter, oil temp measured in oil dipstick, unless noted otherwise.

Printed 2009-02-12 08:33

